

WD-6C

HOOD TYPE DISHWASHER

FEATURES

- Robust and reliable design in stainless steel with components that guarantee a durable and reliable operation for many years
- The machine has an energy saving heat and sound insulating double-skinned hood.
- A good working environment with the unique hood concept
- Self-drained wash pump
- Large deep tank to protect against foaming
- Wash pump intake with strainer
- Easy servicing - the machine is serviced from the front
- Excellent wash results – with selfdraining washing arms
- Powerful washing pressure with anti-blocking nozzles
- Dosing pump for fine dosage of rinse aid

OPTIONS

- 230V/3/50Hz
- Detergent dispenser for liquid detergent
- Drain pump

EXTRA EQUIPMENT

- Connection pipe with non-return valve and vacuum valve
- Steam hood with suction connection
- Shelf for chemical storage
- Sideboard (560 x 560 mm)



TECHNICAL DATA	WD-6C
Wash pump (kW)	0.9
Booster heater (kW)	9
Heater tank (kW)	1.8
Tank volume (litres)	50
Weight, machine in operation (kg)	160
Degree of protection (IP)	45

CAPACITY AND OPERATION DATA	WD-6C
Total time/wash program 1 (min)	1.5
Capacity, max (baskets/h)	35
Water consumption rinse/program (litres)	4
Energy consumption (kWh of connected power)	70-90%
Sound level* (dB(A))	61

* Measured 1 metre from the machine.

CONNECTION, MACHINE	WD-6C
Total connected power (kW)	9.9
Main fuse 400V 3N~ (A)*	16
Max connection area 400V 3N~ (L1-L3, N, PE) Cu (mm2)**	2.5

* Other voltages on request.

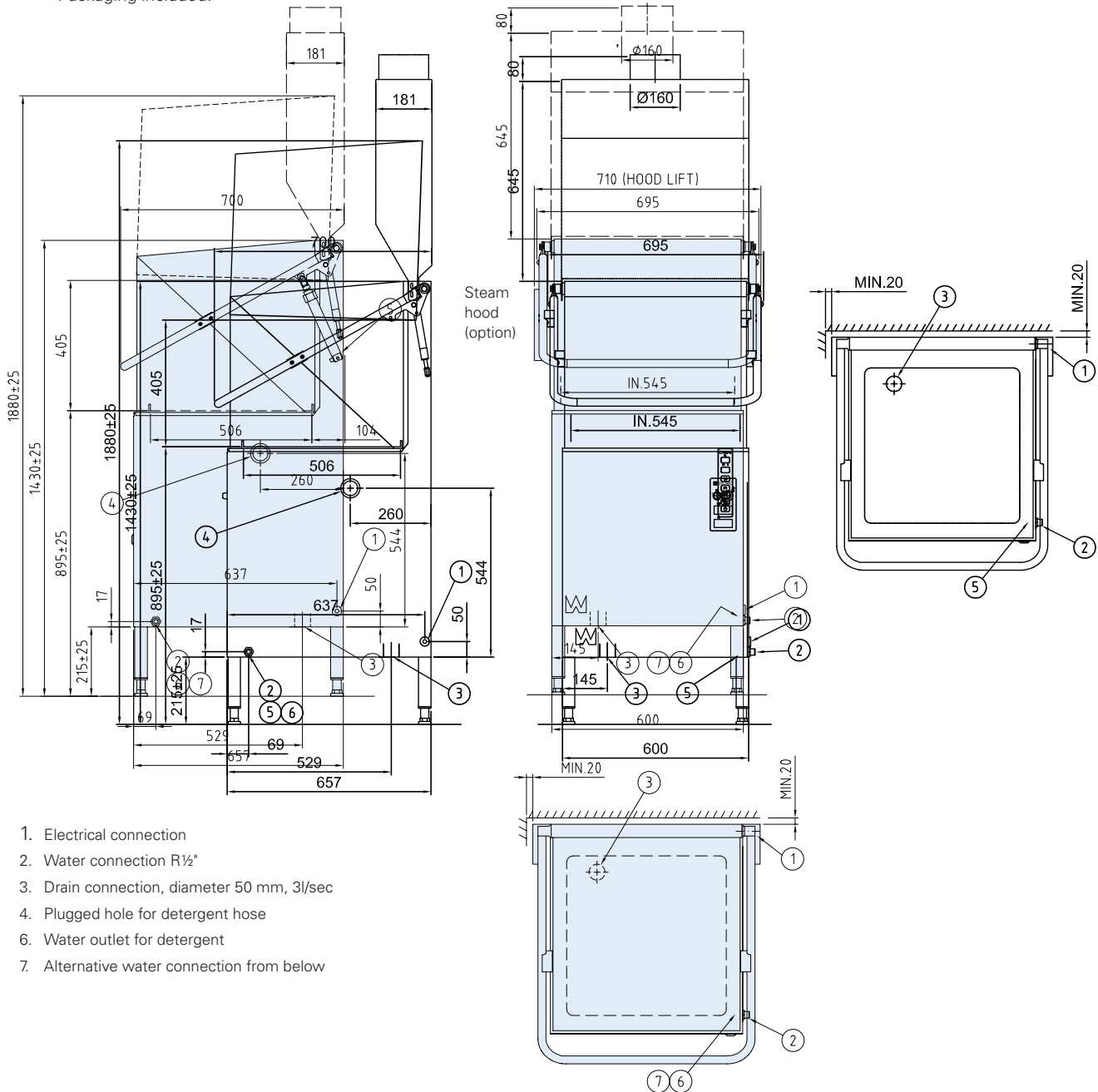
** Cabel 2.5m H07RN-F included.

CONNECTION WATER, DRAIN AND VENTILATION	WD-6C
Water quality, hardness (°dH)	2-7
Hot water connection 55-70°C (external thread)	R ½"
Drain connection, PP pipe (ø mm)	50
Water capacity, pressure (kPa)	180**
Water capacity, flow (litres/min)	18
Floor drain, capacity (litres/sec).	3
Heat load to the room (total, sensible, latent) (kW)	2.3 / 1.7 / 0.6

** If pressure / flow is lower the machine should be equipped with a break tank.

SIZE AND WEIGHT FOR TRANSPORTATION	WD-6C
Size LxWxH (mm) *	765x710x1560
Weight (kg) *	115

* Packaging included.



1. Electrical connection
2. Water connection R½"
3. Drain connection, diameter 50 mm, 3l/sec
4. Plugged hole for detergent hose
6. Water outlet for detergent
7. Alternative water connection from below

We reserve the right to change technical data.

Wexiödisk