



# WD-90GR FLEX

## POT DISHWASHER

- Excellent washing results and fast drying with efficient and energy saving centrifuging spin cycle.
- Perfect for space efficient installations
- No manual pre-wash or scrubbing thanks to heavy rinsing with water and granules
- Stacking of goods can be made directly on the hinged door.
- Unique hexagonal cassette with high capacity for washing containers, holds six ½ or 1/1 containers.
- Wide range of accessories for various items.
- Accessories for washing 65 and 40 mm-deep 2/1 containers and baking trays 600x400 mm.
- Hinged door enables for easy cleaning.
- Six different wash programs with HACCP function.
- Service can easily be made from the front or side



### OPTIONS

- Marine version 400V/3/50 without neutral
- Marine version 440V/3/60 without neutral
- Steam heated design, pressure 50-250 kPa
- Booster pump
- Break tank incl. booster pump
- Stainless couplings in the final rinse
- Connection power restriction
- Connection power restriction Sicotronic
- External power indication
- Web Tool with HACCP documentation and cost- and consumption report

### EXTRA EQUIPMENT

- Table trolley
- Sorting bench
- Holder for accessories, to be placed on the side of the machine
- Square cassette (1 pc included in the delivery)
- Cassette for canteens with handles
- Cassette for large boxes
- Basket for 4 pc GN 1/1-canteens - 200 mm deep
- Granules 10 kg (included in the delivery)
- Cleaning scraper (1 pc included in the delivery)

### ACCESSORIES FOR CASSETTES

- All-round holder 209.7273
- Holder for utensils 209.7277
- Wire basket for small utensils 209.7278
- Holder for small pots 209.7279
- Support wall 209.7280 (1 pc included in the delivery)
- Flexible insert, to be used together with 209.7354 209.7281
- Holder for 1/3, 1/6 and 1/9 containers. 209.7282
- Holder for 1/4, 1/6 containers 209.7286
- Side holder 209.7354
- Rubber strap 209.7272

TECHNICAL DATA	WD-90GR FLEX
Granule pump (kW)	2.2
Rinse pump (kW)	1.5
Motor for the round table (kW)	0.18
Booster heater (kW)	9
Heater tank (kW)	9
Tank volume (litres)	100
Weight, machine in operation (kg)	430
Granule volume (litres)	5
Degree of protection (IP)	IP55

CAPACITY AND OPERATION DATA	WD-90GR FLEX
Total time/wash program 1** (min)	5.2
Total time/wash program 2** (min)	8.2
Total time/wash program 3** (min)	11
Total time/wash program 4** (min)	2.5
Total time/wash program 5** (min)	4
Total time/wash program 6** (min)	7
Capacity, max (1/1 containers/program)****	4
Capacity / h, Pr 1 (1/1-containers) incl. handling ****(pc)	45
Capacity / h, Pr 1 (1/2-containers) incl. handling ****(pc)	90
Cold water consumption rinse/program (litres) *****	3.5-5

CAPACITY AND OPERATION DATA	WD-90GR FLEX
Water consumption cooling/program (litres) *****	0-1,5
Energy consumption (% of connected power)	70-90%
Steam consumption *** (kg/h)	15
Sound level* (dB(A)) washing program with granules	69
Max. surface temp. at room temp. 20°C (°C)	30

\* A-weighted sound pressure level, L<sub>pA</sub>

\*\* Factory setting. The wash time is adjustable

\*\*\* Steam heated machine

\*\*\*\* Max. capacity depending on the depth of the containers.

\*\*\*\*\* Applies under ideal conditions and program using spinning.

The water consumption depends on local conditions. An exact adjustment is made during installation.

CONNECTION, ELECTRICALLY HEATED MACHINE	WD-90GR FLEX
Total connected power (kW)	11,3
Main fuse 400 V, 3N~ (A)*	20
Max.conn.area 400 V, 3N~, (L1-L3,N,PE) Cu (mm <sup>2</sup> )	6

\* Other voltages on request

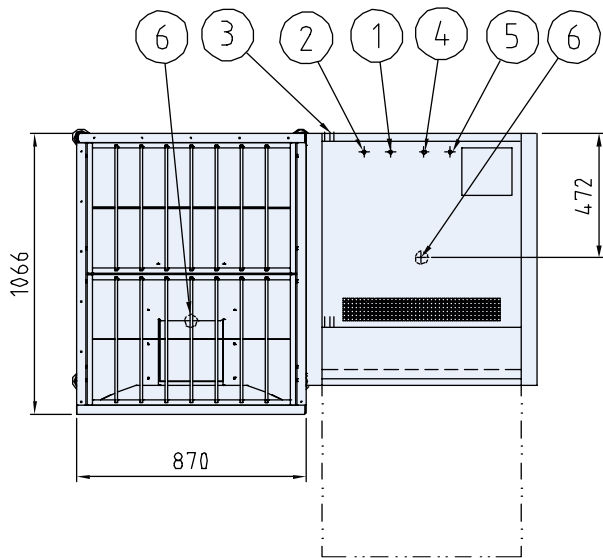
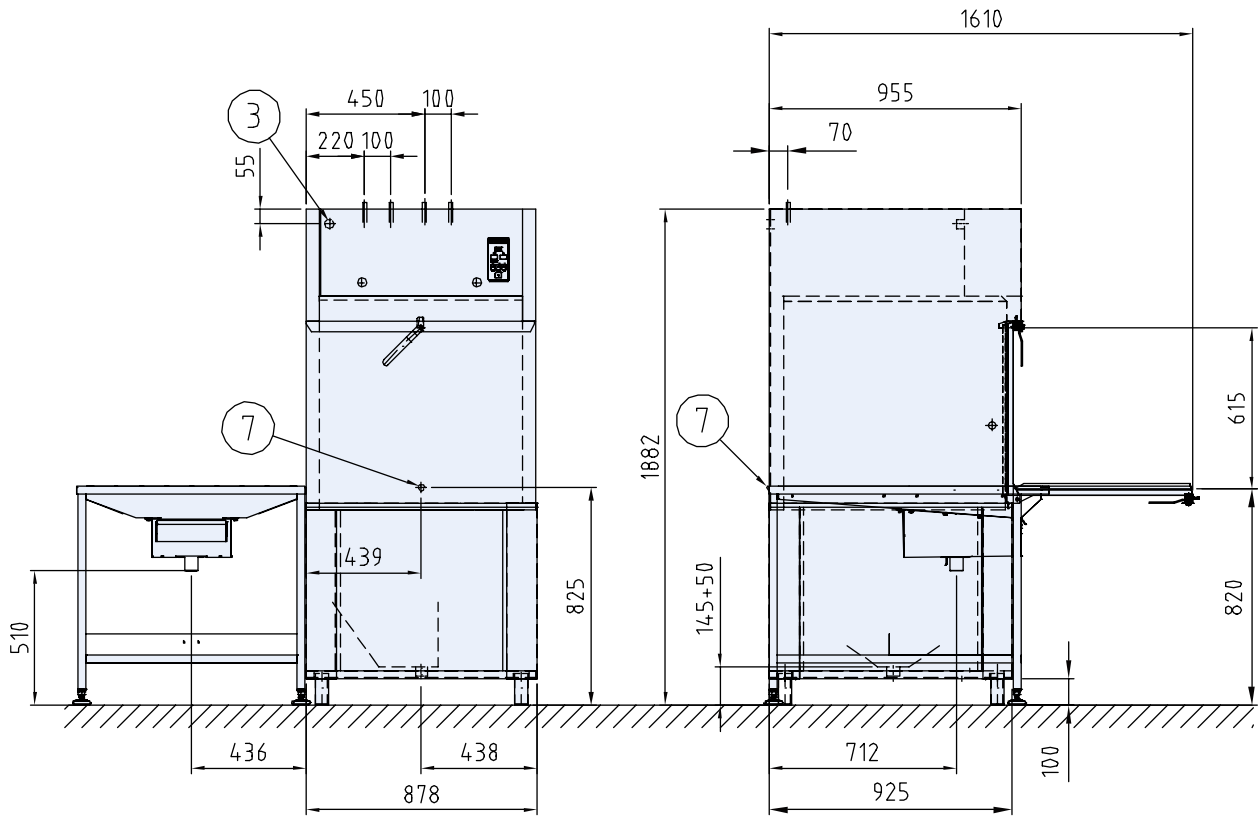
CONNECTION, STEAM HEATED MACHINE 50-250 KPA	WD-90GR FLEX
Total conn.power (kW)	2,4
Main fuse 400 V, 3N~, (A)*	16
Max.conn.area 400 V, 3N~, (L1-L3, N, PE) Cu (mm <sup>2</sup> )	6
Steam connection (internal thread)	R½"
Connection condense water (internal thread)	R½"

\* Other voltages on request

CONNECTION WATER, DRAIN AND VENTILATION	WD-90GR FLEX
Water quality, hardness (°dH)	2 - 7
Cold water connection 5-12°C (internal thread)	R½"
Hot water connection 55-70°C (internal thread)	R½"
Drain connection, PP pipe (ø mm)	50
Water capacity warm water, pressure (kPa)	250
Water capacity warm water, flow (litres/min)	15
Water capacity cold water cooling, min/max pressure (kPa)	100/600
Floor drain, capacity (litres/sec)	3
Ventilation of the machine (m <sup>3</sup> /h)	600

SIZE AND WEIGHT FOR TRANSPORTATION	WD-90GR FLEX
Size * LxWxH (mm)	1060x900x1950
Weight * (kg)	340

\* Packaging included



1. Cold water connection
2. Hot water connection
3. Electrical connection
4. Steam connection (steam-heated machine)
5. Condensation water connection (steam-heated machine)
6. Drain connection
7. Detergent connection

**Wexiödisk**

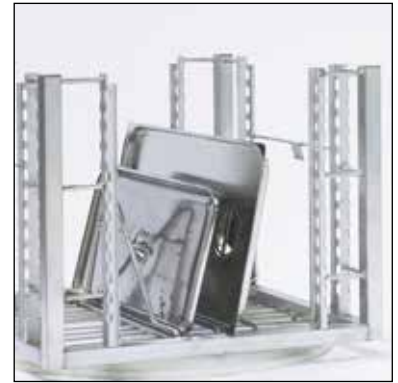
# A selection of accessories for WD-90 GR Flex



Square shaped cassette, part. no. 209.7276  
Included in the delivery.



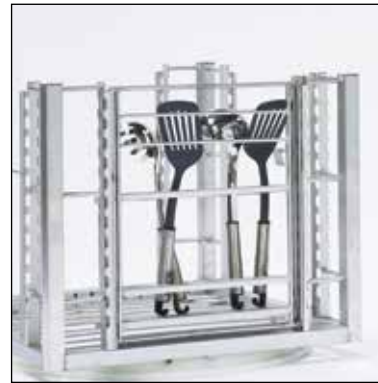
Side holder, part. no. 209.7354  
3 pcs included in the delivery.



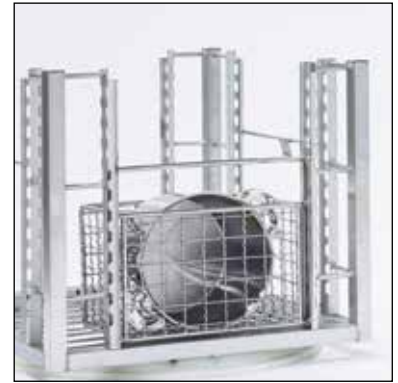
Lid holder, part. no. 209.7280  
3 pcs included in the delivery.



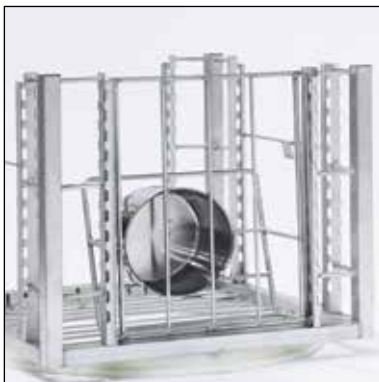
Flexible insert, part. no. 209.7281  
Used together with side holder.  
Included in the delivery.



Utensil holder, part. no. 209.7277



Wire basket, part. no. 209.7278



Holder, part. no. 209.7279  
For small pots and bowls.



Allround holder, part. no. 209.7273  
For pots with handles and ABC-  
containers.



Holder for 1/3, 1/6, 1/9 containers,  
part. no. 209.7282

The following accessories are included as standard:

Cassette	Part. no. 209.7276	1 pc
Lid holder	Part. no. 209.7280	3 pcs
Side holder	Part. no. 209.7354	3 pcs
Flexible insert	Part. no. 209.7281	1 pc

Other additional equipment for other  
kind of dishes can be requested.

## Wexiödisk