

Client \_\_\_\_\_ Quantity \_\_\_\_\_  
Project \_\_\_\_\_ Position \_\_\_\_\_

## Master GN counter 2 doors

**Model:** TA13/1M-710 **Cod:** T10202000201



### Technical data

|                                 |                                 |
|---------------------------------|---------------------------------|
| <b>Top:</b>                     | With top and splashback         |
| <b>Gross capacity:</b>          | 280 lt                          |
| <b>Temperature range:</b>       | -2°+8°C                         |
| <b>Refrigerant unit:</b>        | Plug-in                         |
| <b>Energetic class:</b>         | A                               |
| <b>Energy efficiency index:</b> | 23,3                            |
| <b>Annual consumption:</b>      | 527 kW/h annum                  |
| <b>24h consumption:</b>         | 1,444 kW/h/24h                  |
| <b>Climate class:</b>           | 5                               |
| <b>Cooling gas:</b>             | R290                            |
| <b>Defrost:</b>                 | Hot gas                         |
| <b>Body height:</b>             | 710 mm                          |
| <b>Valve:</b>                   | Supplied standard with solenoid |
| <b>Dimensions (mm):</b>         | 1300×700×950 mm                 |
| <b>Packing dimensions:</b>      | 1395×800×998 mm                 |
| <b>Gross weight:</b>            | 140 Kg                          |
| <b>Voltage:</b>                 | 220-240 V - 50 Hz               |
| <b>Total rate:</b>              | 250 W                           |
| <b>Absorbed Current:</b>        | 1,15 A                          |
| <b>Cooling capacity:</b>        | 406 W*                          |
| <b>*:</b>                       | Evap. -10°C Cond. +55°C         |

### Features

|                                     |  |
|-------------------------------------|--|
| <b>Standard equipment:</b>          | 2 slides, 2 plastic coated GN1/1 shelves   |
| <b>Control:</b>                     | Electronic, display flush with the panel   |
| <b>Doors:</b>                       | 2 doors, self-closing, reversible with 105° stop                                   |
| <b>Door gasket:</b>                 | Magnetic, triple chamber and easily replaceable                                    |
| <b>Insulation:</b>                  | 60 mm thickness - CFC/HCFC free  |
| <b>Exterior/interior finishing:</b> | Exterior interior and back in AISI 304 stainless steel. Base in colaminated steel. |
| <b>Inner corners:</b>               | Rounded for easy cleaning and ensuring maximum hygiene                             |
| <b>Handle:</b>                      | Stainless steel AISI 304, 2 mm thick   |
| <b>Racks and slides:</b>            | Stainless steel AISI 304   |
| <b>Feets:</b>                       | AISI 304 stainless steel adjustable h 100/150 mm                                   |
| <b>Cosmo:</b>                       | Predisposed for Cosmo Hub connection   |

## Accessories and variants

Drawers 1/2

Drawers 1/3

Drawers 1/3 + 2/3

Special counter body heights 650 mm

Special counter body heights 700 mm

Special counter body heights 750 mm

Technical compartment on the left

Lock with key for drawer 1/2

Lock with key for drawer 1/3

Lock with key for drawer 1/3 + 2/3

Glass door

LED lighting

RAL customisable colouring

Plug-in water unit

Stainless steel evaporator

Power supply frequency 60Hz

Other special voltage

Internal hygiene H3

Granite flat worktop

Granite worktop with splashback

Service water sink Ø 300 mm

Single lever mixer hole Ø 3/4

Adjustable feet h 145/195 mm

4 Swivel and brake castors h 128 mm

Brackets for GN pans for drawer

GN1/2 container + lids kit for drawer, h 150 mm

GN1/3 container + lids kit for drawer, h 150 mm

Bottles shelf, stainless steel coating for shelf 350

Stainless steel shelf GN1/1

Plastic coated shelf GN1/1

Pair of type C slides 505 mm

Serial interface, RS485 cable

Cosmo connection kit

IP44 schuko socket with cover

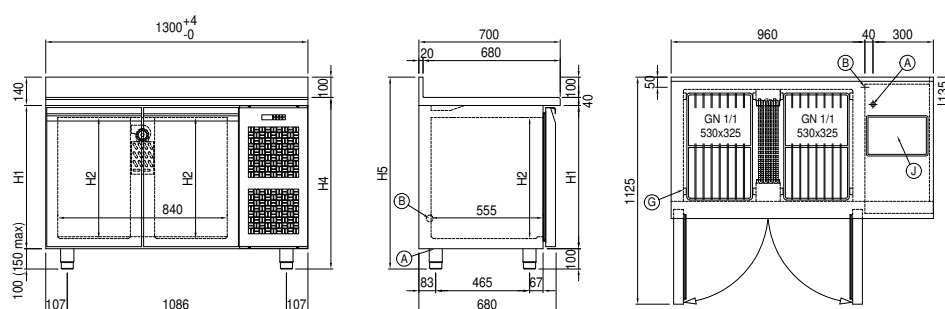
Removable plinth GN 2D h 50 mm

Removable plinth GN 2D h 100 mm

### COSMO - wi-fi control

Cosmo is the wifi technology that allows Coldline appliances to be connected and monitored from a smartphone. The counter connected with

## Technical draw



**A:** Power supply cable outlet

**B:** Condensation water drain

**G:** Racks pitch

**J:** Automatic evaporation of condensing water

In order to constantly offer the best possible products we reserve the right to make changes on technical specifications without incurring any obligation for equipment previously or subsequently sold.