

Client _____ Quantity _____
Project _____ Position _____

Master GN counter 2 doors

Model: TA13/1MR-710 **Cod:** T10212000201



Technical data

Top:	With top and splashback
Gross capacity:	280 lt
Temperature range:	-2°+8°C
Refrigerant unit:	remote
Cooling gas:	R452a
Defrost:	Electric
Body height:	710 mm
Valve:	Supplied standard with solenoid
Dimensions (mm):	1090×700×950 mm
Packing dimensions:	1395×800×998 mm
Gross weight:	110 Kg
Voltage:	220-240 V - 50-60 Hz
Total rate:	810 W
Absorbed Current:	3,7 A
Cooling capacity:	519 W*

Features

Standard equipment:	2 slides, 2 plastic coated GN1/1 shelves
Control:	Electronic, display flush with the panel
Doors:	2 doors, self-closing, reversible with 105° stop
Door gasket:	Magnetic, triple chamber and easily replaceable
Insulation:	60 mm thickness - CFC/HCFC free
Exterior/interior finishing:	Exterior interior and back in AISI 304 stainless steel. Base in colaminated steel.
Inner corners:	Rounded for easy cleaning and ensuring maximum hygiene
Handle:	Stainless steel AISI 304, 2 mm thick
Racks and slides:	Stainless steel AISI 304
Feets:	AISI 304 stainless steel adjustable h 100/150 mm
Cosmo:	Predisposed for Cosmo Hub connection

Accessories and variants

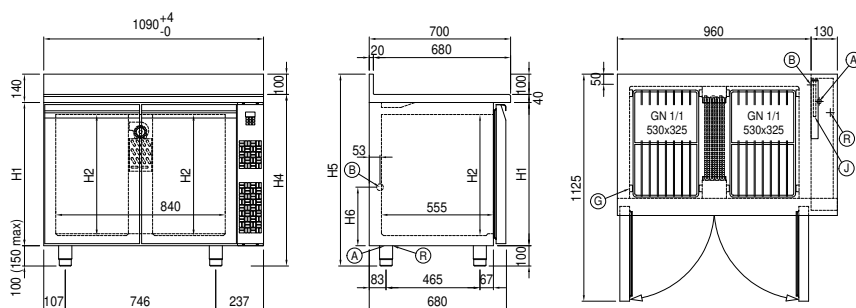
Drawers 1/2
Drawers 1/3
Drawers 1/3 + 2/3
Special counter body heights 650 mm
Special counter body heights 700 mm
Special counter body heights 750 mm
Technical compartment on the left
Common technical compartment
Counters without a technical compartment
Lock with key for drawer 1/2
Lock with key for drawer 1/3
Lock with key for drawer 1/3 + 2/3
Glass door
LED lighting
RAL customisable colouring
Stainless steel evaporator
Predisposition for connection to CO2 remote control unit
Power supply frequency 60Hz

Other special voltage
Internal hygiene H3
Granite flat worktop
Granite worktop with splashback
Remote condensing unit EMT6165GK
Adjustable feet h 145/195 mm
4 Swivel and brake castors h 128 mm
Brackets for GN pans for drawer
GN1/2 container + lids kit for drawer, h 150 mm
GN1/3 container + lids kit for drawer, h 150 mm
Bottles shelf, stainless steel coating for shelf 350
Stainless steel shelf GN1/1
Plastic coated shelf GN1/1
Pair of type C slides 505 mm
Serial interface, RS485 cable
Cosmo connection kit
Removable plinth GN 2DR h 50 mm
Removable plinth GN 2DR h 100 mm

Remote unit technical data

Voltage:	220-240 V - 50 Hz
-----------------	-------------------

Technical draw



- | | | |
|---|------------------------------------|-----------------------|
| A: Power supply cable outlet | B: Condensation water drain | G: Racks pitch |
| J: Automatic evaporation of condensing water | R: Gas output pipes | |

In order to constantly offer the best possible products we reserve the right to make changes on technical specifications without incurring any obligation for equipment previously or subsequently sold.