

Client _____ Quantity _____
Project _____ Position _____

Master GN counter 3 doors

Model: TA17/1M-710 **Cod:** T10302000201



Technical data

Top:	With top and splashback
Gross capacity:	440 lt
Temperature range:	-2°+8°C
Refrigerant unit:	Plug-in
Energetic class:	A
Energy efficiency index:	24,7
Annual consumption:	616 kW/h annum
24h consumption:	1,688 kW/h/24h
Climate class:	5
Cooling gas:	R290
Defrost:	Hot gas
Body height:	710 mm
Valve:	Supplied standard with solenoid
Dimensions (mm):	1780×700×950 mm
Packing dimensions:	1875×800×998 mm
Gross weight:	165 Kg
Voltage:	220-240 V - 50 Hz
Total rate:	250 W
Absorbed Current:	1,15 A
Cooling capacity:	406 W*
*:	Evap. -10°C Cond. +55°C

Features

Standard equipment:	3 slides, 3 plastic coated GN1/1 shelves
Control:	Electronic, display flush with the panel
Doors:	3 doors, self-closing, reversible with 105° stop
Door gasket:	Magnetic, triple chamber and easily replaceable
Insulation:	60 mm thickness - CFC/HCFC free
Exterior/interior finishing:	Exterior interior and back in AISI 304 stainless steel. Base in colaminated steel.
Inner corners:	Rounded for easy cleaning and ensuring maximum hygiene
Handle:	Stainless steel AISI 304, 2 mm thick
Racks and slides:	Stainless steel AISI 304
Feets:	AISI 304 stainless steel adjustable h 100/150 mm
Cosmo:	Predisposed for Cosmo Hub connection

Accessories and variants

Drawers 1/2

Drawers 1/3

Drawers 1/3 + 2/3

Special counter body heights 650 mm

Special counter body heights 700 mm

Special counter body heights 750 mm

Technical compartment on the left

Lock with key for drawer 1/2

Lock with key for drawer 1/3

Lock with key for drawer 1/3 + 2/3

Glass door

LED lighting

RAL customisable colouring

Plug-in water unit

Stainless steel evaporator

Power supply frequency 60Hz

Other special voltage

Internal hygiene H3

Granite flat worktop

Granite worktop with splashback

Service water sink Ø 300 mm

Single lever mixer hole Ø 3/4

Adjustable feet h 145/195 mm

4 Swivel and brake castors h 128 mm

Brackets for GN pans for drawer

GN1/2 container + lids kit for drawer, h 150 mm

GN1/3 container + lids kit for drawer, h 150 mm

Bottles shelf, stainless steel coating for shelf 350

Stainless steel shelf GN1/1

Plastic coated shelf GN1/1

Pair of type C slides 505 mm

Serial interface, RS485 cable

Cosmo connection kit

IP44 schuko socket with cover

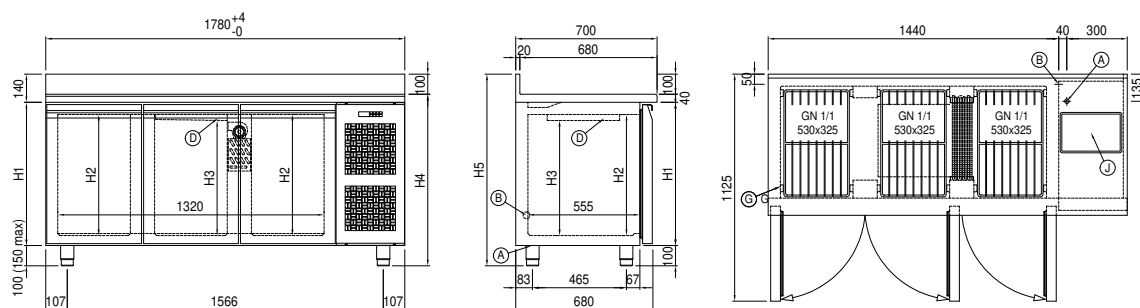
Removable plinth GN 3D h 50 mm

Removable plinth GN 3D h 100 mm

COSMO - wi-fi control

Cosmo is the wifi technology that allows Coldline appliances to be connected and monitored from a smartphone. The counter connected with

Technical draw



A: Power supply cable outlet

B: Condensation water drain

D: Airflow conveyor

G: Racks pitch

J: Automatic evaporation of condensing water

In order to constantly offer the best possible products we reserve the right to make changes on technical specifications without incurring any obligation for equipment previously or subsequently sold.