

Client _____ Quantity _____
Project _____ Position _____

Master GN counter 4 doors

Model: TA21/1M-710 **Cod:** T10402000201



Technical data

Top:	With top and splashback
Gross capacity:	599 lt
Temperature range:	-2°+8°C
Refrigerant unit:	Plug-in
Energetic class:	B
Energy efficiency index:	30,7
Annual consumption:	836 kW/h annum
24h consumption:	2,29 kW/h/24h
Climate class:	5
Cooling gas:	R290
Defrost:	Hot gas
Body height:	710 mm
Valve:	Supplied standard with solenoid
Dimensions (mm):	2260×700×950 mm
Packing dimensions:	2355×800×998 mm
Gross weight:	215 Kg
Voltage:	220-240 V - 50 Hz
Total rate:	250 W
Absorbed Current:	1,15 A
Cooling capacity:	406 W*
*:	Evap. -10°C Cond. +55°C

Features

Standard equipment:	4 slides, 4 plastic coated GN1/1 shelves
Control:	Electronic, display flush with the panel
Doors:	4 doors, self-closing, reversible with 105° stop
Door gasket:	Magnetic, triple chamber and easily replaceable
Insulation:	60 mm thickness - CFC/HCFC free
Exterior/interior finishing:	Exterior interior and back in AISI 304 stainless steel. Base in colaminated steel.
Inner corners:	Rounded for easy cleaning and ensuring maximum hygiene
Handle:	Stainless steel AISI 304, 2 mm thick
Racks and slides:	Stainless steel AISI 304
Feets:	AISI 304 stainless steel adjustable h 100/150 mm
Cosmo:	Predisposed for Cosmo Hub connection

Accessories and variants

Drawers 1/2

Drawers 1/3

Drawers 1/3 + 2/3

Special counter body heights 650 mm

Special counter body heights 700 mm

Special counter body heights 750 mm

Technical compartment on the left

Lock with key for drawer 1/2

Lock with key for drawer 1/3

Lock with key for drawer 1/3 + 2/3

Glass door

LED lighting

RAL customisable colouring

Plug-in water unit

Stainless steel evaporator

Power supply frequency 60Hz

Other special voltage

Internal hygiene H3

Granite flat worktop

Granite worktop with splashback

Service water sink Ø 300 mm

Single lever mixer hole Ø 3/4

Adjustable feet h 145/195 mm

6 Swivel and brake castors h 128 mm

Brackets for GN pans for drawer

GN1/2 container + lids kit for drawer, h 150 mm

GN1/3 container + lids kit for drawer, h 150 mm

Bottles shelf, stainless steel coating for shelf 350

Stainless steel shelf GN1/1

Plastic coated shelf GN1/1

Pair of type C slides 505 mm

Serial interface, RS485 cable

Cosmo connection kit

IP44 schuko socket with cover

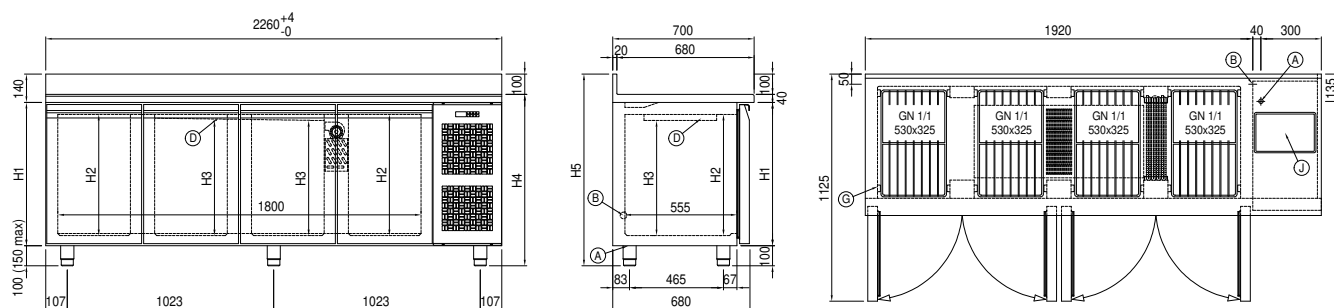
Removable plinth GN 4D h 50 mm

Removable plinth GN 4D h 100 mm

COSMO - wi-fi control

Cosmo is the wifi technology that allows Coldline appliances to be connected and monitored from a smartphone. The counter connected with

Technical draw



A: Power supply cable outlet

B: Condensation water drain

D: Airflow conveyor

G: Racks pitch

J: Automatic evaporation of condensing water